

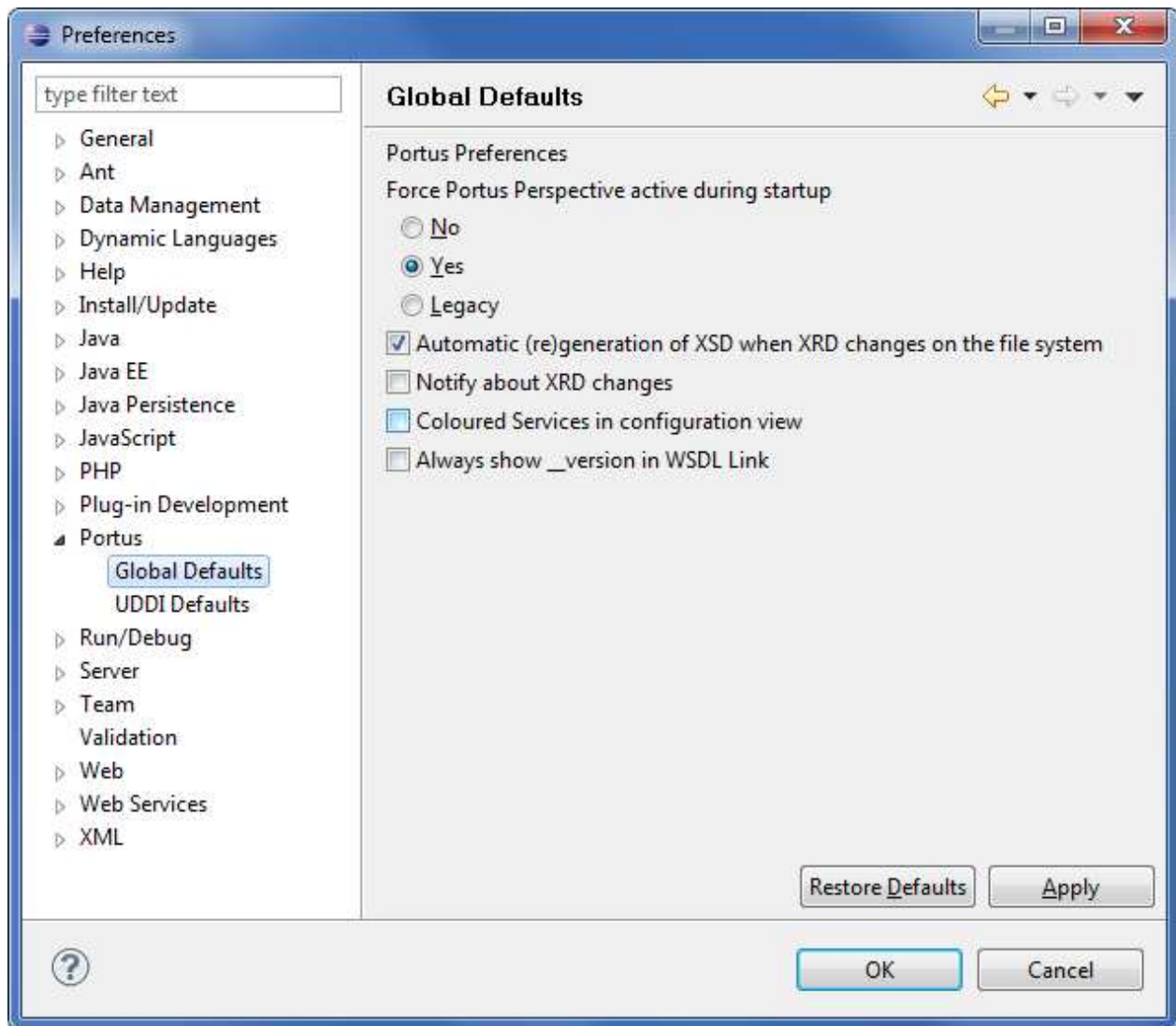
# Setting Preferences for the SOA Gateway Control Centre

Preference switches are available to tailor the SOA Gateway Control Centre to your needs.

---

## Working with the Preferences

Invoke the preferences via Window->Preferences...



- "Force SOA Gateway Perspective active during startup" can be either
  - *No*: Eclipse will be started with the state restored to what it was when last exited.
  - *Yes*: The SOA Gateway Administration perspective will be activated when Eclipse is started

- *Legacy*: The SOA Gateway "Legacy" perspective will be activated when Eclipse is started
- "Automatic (re)generation of XSD when XRD changes on the file system.
- "Notify about XRD changes" informs you whenever an XRD is added to or changed within your Eclipse workspace.
- "Coloured Services in configuration view" assigns different colours to the various Service types (Adabas, Natural, ODBC, ..) for better distinction
- "Always show \_version in WSDL Link" shows the Service version number for better distinction

Click "Apply" and/or "OK" to save your preference changes.